

FL • Optimum Diagram

Cleaning, lubrication, and storage

Cleaning: After exposure to dirt, sand, or salt water, it is essential to bathe or flush your Fly Logic reel in fresh water before reuse. Please refer to lubrication recommendations.

For salt water exposure, a thorough rinsing of your reel under a moderate stream of fresh water is required.

Salt water use: Your Fly Logic reel is designed for both fresh and salt water destinations. However, special cleaning procedures must be observed in order to protect your reel for years of enjoyment.

A thorough rinsing of your reel under a moderate stream of fresh water is required after each use. Salt water, in addition to being highly corrosive, leaves a gummy, gritty residue as it dries. We recommend that you utilize a soft toothbrush and gently clean all surfaces, including the underside of the drag knob (use a penny to remove the lock nut), while allowing the fresh water to irrigate the reel while you brush. Relieve drag pressure to allow water to rinse between drag surfaces.

We also recommend a light lubrication after the salt water cleaning procedure. Please refer to lubrication recommendations

Lubrication: During a normal season of use, lubrication is generally not necessary. The Oilite bearings and Delrin®/Teflon drag components are self-lubricating. After heavy use (salt water, sandy conditions, etc.), cleaning and lubrication are recommended. Apply a light coating of any quality lubricating oil (not something out of can you'd spray on door hinges) to the spindle surface and the groove in the "Micro-Mate" spindle hex cap. Don't overdo it. Only a very light film of lubricant should be applied. Avoid getting lubricant between disc drag components as this alters their inherent frictional values.

Storage: At season's end, or about once each year, we recommend thoroughly bathing your reel in fresh water followed by wiping with a soft, dry cloth. Lubricate per the recommended procedure. It is also important to relieve the tension on the drag system by backing off the drag knob completely prior to storing your reel for any extended period of time.

Your Fly Logic Warranty

Your Fly Logic reel includes a lifetime warranty free from defects in materials or workmanship to the original owner only. We carefully inspect all reels prior to shipment; however, should you detect any defect in either material or workmanship, please return your reel to an authorized Fly Logic Dealer or by prepaid postage to: Fly Logic, Inc., 511 Broadway Avenue, P.O. Box 270, Melba, Idaho 83641-0270 (Phone: 208-495-2090, E-mail: fli@flylogic.com). Fly Logic will repair or replace the defective part(s) and return the reel to the original owner for a \$25 processing, handling and shipping fee.

Your Fly Logic reel should be periodically cleaned and lubricated as described in this owners manual. Properly cared for, your reel will provide you with many years of great memories. Welcome to the Fly Logic family. To implement the warranty, please complete the registration card provided with your reel and return to Fly Logic within thirty (30) days from date of purchase.

This warranty does not extend to any Fly Logic product that has been damaged or rendered defective as a result of (1) unreasonable use or neglect, (2) the use of parts not supplied by Fly Logic or (3) by modification of the product. Nor does the warranty cover normal wear and tear caused by use of the product over time.

If repair is needed due to any reason listed above (1, 2 or 3), your Fly Logic reel may be serviced by our trained technicians for a shipping and handling fee of \$25.00, together with the cost of parts. This is for service which may not be covered under the warranty. (01/06)

THE ABOVE-DESCRIBED WARRANTY IS GIVEN IN LIEU OF ALL OTHER WARRANTIES EITHER EXPRESSED OR IMPLIED.

This warranty is limited as set forth above and does not cover any consequential, special or incidental damages. These limitations and exclusions may not apply to you, depending upon specific legal rights, which may vary from state to state.

FL • Optimum™ Series Reels

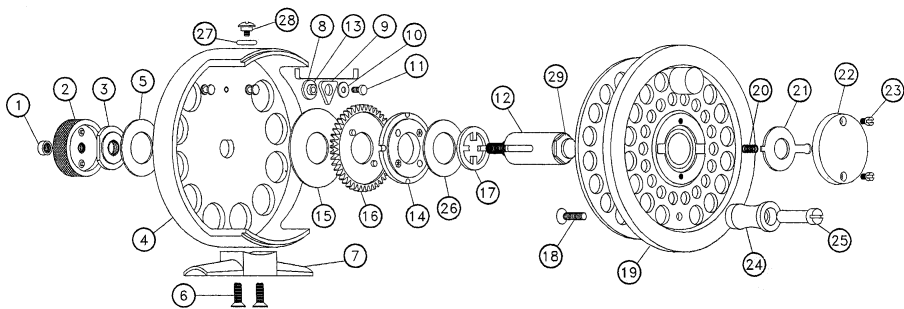
Owner's Manual

Congratulations on the purchase of your Fly Logic reel which is proudly made in the USA. We're aware you had many options in the selection of a fly reel and are pleased you decided Fly Logic is your reel of choice. You can expect this reel to provide many years of dependable performance and enjoyment.

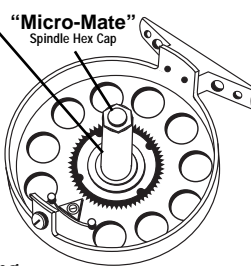
At the inception of our company, we compiled a "wish list" of features, pricing and materials that were used as our goal for the FL • Optimum Series reel. Without exception, each objective originally desired has been achieved or exceeded. The result is the quality reel you now own. Our research and development team has dedicated themselves to months of intensive design, engineering and testing to create the unique array of features listed inside.

FLYLOGIC[®]

Logical products for fly fishing™



Lube areas



ITEM	DESCRIPTION	PART
1	Lock Nut	P3006
2	Drag Knob	PM2009
3	Spindle Nut	P3003
4	Frame	Use Model #
5	Knob Washer	PM2011
6	Foot Screw(2)	P3016
7	Foot	Use Model #
8	Clicker Spring	P3022
9	Clicker Pawl	P3020
10	Pawl Washer	P3023

ITEM	DESCRIPTION	PART
11	Pawl Screw	P3017
12	Spindle Cartridge	PM3030
13	Pawl Post	PM2015
14	Clutch Assembly	PM3031
15	Drag Washer	P3008
16	Gear	PM2003
17	Pressure Plate	P3009
18	Handle Screw	P3016
19	Spool	Use Model #
20	Release Spring	P3015

ITEM	DESCRIPTION	PART
21	Release Lever	P3011
22	Release Housing	PM2010
23	Release Screw(2)	P3018
24	Handle	P3010
25	Handle Shaft	P3002
26	Thrust Washer	PM2008
27	O-Ring	Use Model #
28	Tippet Screw	PM2020
29	"Micro-Mate" Spindle Hex Cap	P3004

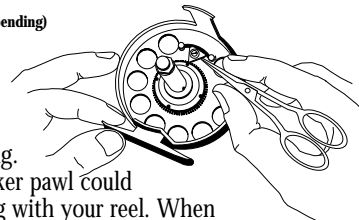
The Benefits of Logic

Center line disc drag system (patent pending)

Since we believe that the heart of any fly reel is the drag system, your Fly Logic drag has unsurpassed reliability and functionality which includes a maintenance-free disc braking system and ergonomically designed center drag knob with a detented click adjustment. Drag tension ranges from a virtually free spool for the most delicate situations to robust pressure for bigger fish. The large capacity spring system allows a gradual, delicate load to the drag mechanism. In addition, the centrally located drag knob will be easy to find, without looking, when that all-important take and run occurs. The FL•Optimum features what may be one of the world's smallest torque converter systems. The one-way clutch is freewheeling in one direction and instantly engaged in the other direction. This provides a "tippet friendly" braking response with virtually no starting inertia. That's why we call this anti-reverse clutch the Tippet Protector® system, which is a Fly Logic exclusive.

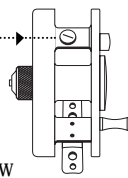
Pleasing three-way adjustable drag alarm (patent pending)

It's your choice. The alarm system for your reel is adjustable in three ways: traditional click, whisper click and silent mode. Of the two audible options, we recommend the traditional click since the added pawl shoulder will keep better tension against the clicker spring. It is possible, due to a radical stripping rate, that the clicker pawl could infrequently index to a silent position -- nothing is wrong with your reel. When convenient, remove the spool and rotate the pawl to the position of your choice.



Tippet Anchor™ (patent pending)

The innovative Tippet Anchor ends frustration over crimped tippets and the inevitable fumbling to find the tag end. At the end of your day, simply place the monofilament under the O-ring. Your tippet won't be buried on the spool the next time you thread your rod. CAUTION - The tippet screw and rubber grip (O-ring) is a factory-installed accessory. No adjustment (screw rotation) is necessary or desirable. The tippet screw must remain firmly seated against the frame or loss may occur. Suggested Tippet Anchor™ diameter usage ranges from 16 LB Steelhead (larger than OX) through 7X tippet.



Stationary interlock between spool and frame

Have you ever noticed a spongy tolerance between an engaged frame and spool when you pull both components in opposite directions? Other than a required tolerance for machining standards, your FL•Optimum Series reel is locked stationary to the frame once the spool is engaged. This will eliminate unnecessary "floating" on the spindle shaft while stripping or retrieving line.

Easy spool interchange

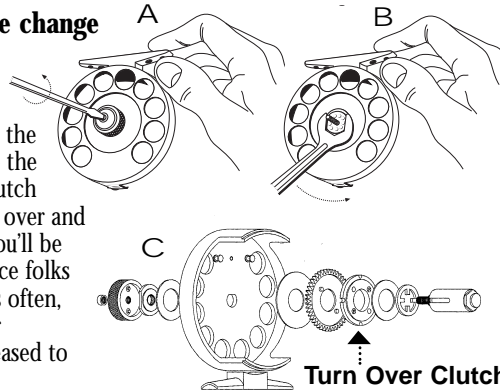
All of the guides, dealers and consumers seem to say the same thing: "Provide us with an easy spool interchange system." We were happy to oblige. *To remove spool from frame:* depress release lever and pull spool from frame. *To engage spool to frame:* depress release lever and guide spool on spindle until docking occurs. Rotate spool until spool lugs interlock with clutch mechanism, release lever.

Large diameter spindle configuration

When you remove the spool from your FL•Optimum Series reel you'll notice the large diameter spindle. The large spindle provides a greater heat displacement under heavy use. This means that the inevitable season-after-season wear and tear to your reel is minimized.

Simple left to right hand retrieve change

(1) Remove the spool from the frame. (2) Remove the screw and take off the drag knob (illus. A). (3) With a 5/8" wrench, remove the lock nut to release the spindle shaft unit (illus. B). (4) Remove the knob washer, drag washer, gear, and clutch assembly (illus. C). (5) Turn the clutch over and replace all the parts in reverse order. You'll be ready to fish in about five minutes. Since folks normally don't change dominant hands often, this may be a one-time operation. Your authorized Fly Logic Dealer will be pleased to assist if you have any questions.



Protective high gloss anodize finish

The FL•Optimum Series reel has undergone several extra steps to achieve the luster finish you will enjoy for years to come. The aluminum is treated with a process that removes any hairline surface scratches prior to the anodize treatment. As a result of these extra steps, your reel has a mirrored finish (similar to optical products: binoculars, scopes, etc.) that will endure for years and years of use.

Reel foot conforms to industry standards

You may not be aware that the fly tackle industry, came to an agreement regarding the reel seat and foot standards. This was prompted by dealer and consumer demand to offer uniformity so that all reels would eventually fit on all rods. Great idea! Be assured that the Fly Logic team, known for meticulous detail, has made your reel to exacting specifications that will easily fit within the industry requirements.

Ample line capacity; generous palming area

A generous line capacity was one of the most important "wish list" features that we discussed early on. All our reels will accommodate plenty of backing (see the chart for exact measurements). And keep in mind that no measurements have been hyped by using inferior, smaller line. All specifications were compiled with top quality lines. For those "traditional anglers," we have provided the option of braking by hand by engineering a generous palming area.

WF Floating Line

Model*	Backing Capacity (yds)
FLO 234	135/110/90
FLO 456	170/155/130
FLO 789	225/190/175
FLO 789 LA Large Arbor Spool	6wt./115 7wt./90 (8wt/50)

DT Floating Line

Model*	Backing Capacity (yds)
FLO 234	75/60/40
FLO 456	135/110/85

*Model numbers denote line weight: FLO 234= 2wt./3wt./4wt.

Note: Line and backing measurements conducted with 444/444SL Cortland® & Scientific Anglers® Mastery WF floating lines with 20 lb. Micron® backing, except FLO 234 where 12 lb. Micron® backing was used.

Non-audible retrieve mechanism

Unlike many clicker systems that make an annoying ratchet noise, your FL•Optimum Series reel will retrieve line with a silent operation that is extremely smooth. After a long day on the water you will appreciate this "silent" feature.

"Micro-Mate" spool tuning system

The "Micro-Mate" spool tuning system is an innovative feature that provides spool to frame clearance adjustment. Our quick release spool locking mechanism requires a small amount of spool end play for easy engagement and disengagement. The "Micro-Mate" system allows us (at the factory) to optimize this clearance amount. It allows you to tune your Fly Logic reel to accommodate additional spools or compensate for wear.

PROCEDURE - With the spool mounted and engaged, check the amount of end play (simply push and pull the spool in and out). If too little clearance exists, the release lever won't engage or drag will be felt when the spool is spun in the retrieval direction. Too much end play is self-describing.

1. If adjustment is desired, remove the spool from the reel. Using the handy "Micro-Mate" wrench we provide (any 7/16 wrench will do), engage the spindle hex cap (see diagram). Rotate the cap clockwise and tighten completely to re-establish the starting point of your "Micro-Mate" adjustment range. (Clockwise rotation also reduces the amount of the spool end play or clearance.)
2. If additional clearance is desired, rotate the cap slightly in a counter-clockwise direction. Mount the spool after each small adjustment and check for desired fit.

CAUTION - The "Micro-Mate" adjustment range is full clockwise to approximately 1/4 turn counter-clockwise. DO NOT exceed the 1/4 turn counter-clockwise limit as the spindle hex cap may then become loose. A little adjustment goes a long way.

