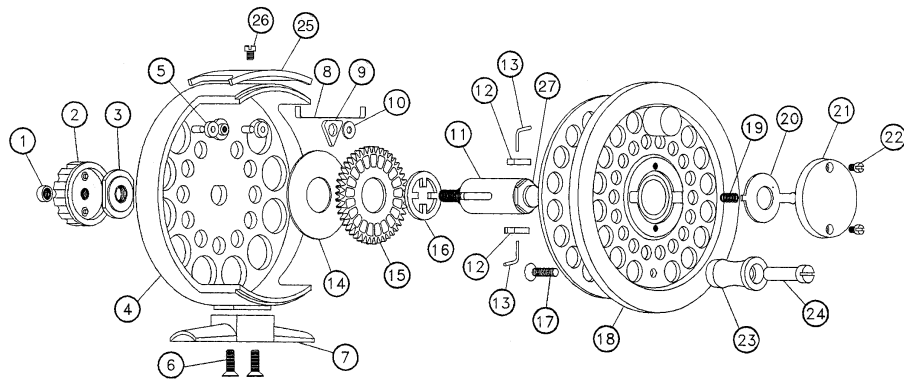


FL • Premium Diagram



ITEM	DESCRIPTION	PART	ITEM	DESCRIPTION	PART	ITEM	DESCRIPTION	PART
1	Lock Nut	P3006	11	Spindle Cartridge	PC3030	21	Release Housing	PC1011
2	Drag Knob	PC1010	12	Reverse Pawl (2)	PC1008	22	Release Screw(2)	P3018
3	Spindle Nut	P3003	13	Pawl Pin (2)	PC1003	23	Handle	P3010
4	Frame	Use Model #	14	Drag Washer	P3008	24	Handle Shaft	P3002
5	Spring Anchor	PC1004	15	Clutch	PC1007	25	Line Guard	PC1005
6	Foot Screw(2)	P3016	16	Pressure Plate	P3009	26	Line Guard Screw	PC1009
7	Foot	Use Model #	17	Handle Screw	P3019	27	"Micro Mate" Spindle Hex Cap	P3004
8	Clicker Spring	P3022	18	Spool	Use Model #			
9	Clicker Pawl	P3020	19	Release Spring	P3015			
10	Pawl Retainer	PC1012	20	Release Lever	P3011			

Cleaning, lubrication, and storage

Cleaning: After exposure to dirt, sand, or salt water, it is essential to bathe or flush your Fly Logic reel in fresh water before reuse.

For salt water exposure, a thorough rinsing of your reel under a moderate stream of fresh water is required.

Salt water use: Your Fly Logic reel is designed for both fresh and salt water destinations. However, special cleaning procedures must be observed in order to protect your reel for years of enjoyment.

A thorough rinsing of your reel under a moderate stream of fresh water is required after each use. Salt water, in addition to being highly corrosive, leaves a gummy, gritty residue as it dries. We recommend that you utilize a soft toothbrush and gently clean all surfaces, including the underside of the drag knob (use a penny to remove the lock nut), while allowing the fresh water to irrigate the reel while you brush. Relieve drag pressure to allow water to rinse between drag surfaces.

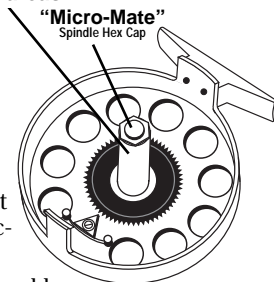
We also recommend a light lubrication after the salt water cleaning procedure. Please refer to lubrication recommendations

Lubrication: During a normal season of use, lubrication is generally not necessary. The oilite bearings and Delrin® gears in your Fly Logic reel are self-lubricating. After heavy use (salt water, sandy conditions, etc.), cleaning and lubrication are recommended. See storage section below.

At season's end or about once each year, we recommend thoroughly bathing your reel in fresh water followed by wiping with a soft, dry cloth, then applying a light coating of any quality reel lubrication oil (not something out of a can you'd spray on door hinges) to the end of the spindle nut and shaft. Don't overdo it. Only a very light film of lubrication should be applied.

It is also important to relieve the tension on the drag system by backing off the drag knob completely prior to storing your reel for any extended period of time.

Lube areas



Your Fly Logic Warranty

Your Fly Logic reel includes a lifetime warranty free from defects in materials or workmanship to the original owner only. We carefully inspect all reels prior to shipment; however, should you detect any defect in either material or workmanship, please return your reel to an authorized Fly Logic Dealer or by prepaid postage to: Fly Logic, Inc., 511 Broadway Avenue, P.O. Box 270, Melba, Idaho 83641-0270 (Phone: 208-495-2090; www.flylogic.com). Fly Logic will repair or replace, the defective part(s) and return the reel to the original owner for a \$25 processing, handling and shipping fee.

Your Fly Logic reel should be periodically cleaned and lubricated as described in this owners manual. Properly cared for, your reel will provide you with many years of great memories. Welcome to the Fly Logic family.

To implement the warranty, please complete the registration card provided with your reel and return to Fly Logic within thirty (30) days from date of purchase.

This warranty does not extend to any Fly Logic product that has been damaged or rendered defective as a result of (1) unreasonable use or neglect, (2) the use of parts not supplied by Fly Logic or (3) modification of the product. Nor does the warranty cover normal wear and tear caused by use of the product over time.

If repair is needed due to any reason listed above (1, 2 or 3), your Fly Logic reel may be serviced by our trained technicians for a shipping and handling fee of \$25.00, together with the cost of parts. This is for service which may not be covered under the warranty. (01/06)

THE ABOVE-DESCRIBED WARRANTY IS GIVEN IN LIEU OF ALL OTHER WARRANTIES EITHER EXPRESSED OR IMPLIED.

This warranty is limited as set forth above and does not cover any consequential, special or incidental damages. These limitations and exclusions may not apply to you, depending upon specific legal rights, which may vary from state to state.

FL • Premium™ Series Reels

Owner's Manual

Congratulations on the purchase of your Fly Logic reel which is proudly made in the USA. We're aware you had many options in the selection of a fly reel and are pleased you decided Fly Logic is your reel of choice. You can expect this reel to provide many years of dependable performance and enjoyment.

At the inception of our company, we compiled a "wish list" of features, pricing and materials that were used as our goal for the FL • Premium Series reel. Without exception, each objective originally desired has been achieved or exceeded. The result is the quality reel you now own. Our research and development team has dedicated themselves to months of intensive design, engineering and testing to create the unique array of features listed inside.

FLYLOGIC®

Logical products for fly fishing™

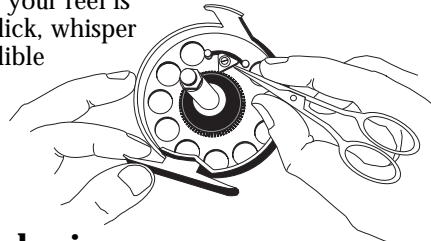
The Benefits of Logic

Center line disc drag system

Since we believe that the heart of any fly reel is the drag system, your Fly Logic drag has unsurpassed reliability and functionality which includes a maintenance-free disc braking system and ergonomically designed center drag knob with a detented click adjustment. Drag tension ranges from practically free spool for the most delicate situations to robust pressure for bigger fish. The FL•Premium Series features precision drag engagement which provides a “tippet friendly” response with virtually no starting inertia. The large capacity spring system allows a gradual, delicate load to the drag mechanism. In addition, the centrally located drag knob will be easy to locate, without looking, when that all-important take and run occurs. Our center line drag system with rapid engagement is a Fly Logic exclusive.

Pleasing three-way adjustable drag alarm (patent 5,918,826)

It's your choice. The alarm system for your reel is adjustable in three ways: traditional click, whisper click and silent mode. Of the two audible options, we recommend the traditional click since the added pawl shoulder will keep better tension against the clicker spring. Another Fly Logic exclusive.



Pleasing audible retrieve mechanism

Unlike many click and pawl systems that make an unpleasant ratchet sound, your FL•Premium Series reel will retrieve line with a whisper operation that is extremely smooth. After a long day on the water, you will appreciate this “quiet” feature.

Stationary interlock between spool and frame

Have you ever noticed a spongy tolerance between an engaged frame and spool when you pull both components in opposite directions? Other than a required tolerance for machining standards, your FL•Premium Series reel is locked stationary to the frame once the spool is engaged. This will eliminate any unnecessary “floating” on the spindle shaft while stripping or retrieving line.

Easy spool interchange

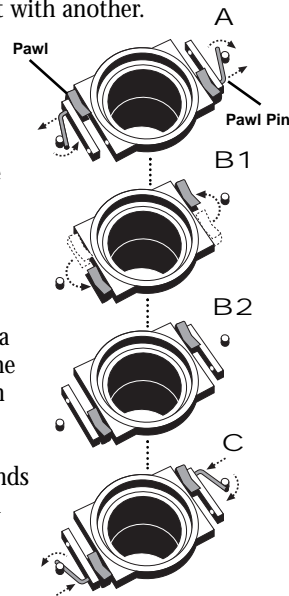
All of the guides, dealers and consumers seem to say the same thing: “Provide us with an easy spool interchange system.” We were happy to oblige. Simply press in the spool release lever, remove the spool and exchange it with another.

Large diameter spindle configuration

When you remove the spool from your FL•Premium Series reel, you'll notice the large diameter spindle. This large spindle provides more heat displacement under heavy use. This basically means that the inevitable season-after-season wear and tear to your reel is minimized.

Simple left to right hand retrieve change

(1) Remove the spool from the frame. (2) From the back side of the spool, turn and pull the pawl pin, one side at a time (illus. A). (3) Switch the pawl direction, mirroring the previous configuration (illus. B1 & B2). (4) Replace the pin (illus. C). (5) Repeat the function on the other pawl and replace the spool. You'll be ready to fish in about five minutes. Since folks normally don't change dominant hands often, this may be a one-time operation. Your authorized Fly Logic Dealer will be pleased to assist if you have any questions.



Protective powder coat finish

This process first requires a finish operation prior to coating. The second step includes spraying the aluminum with a powder coat paint then baking the frames and spools at a high temperature. The result is a durable, corrosion-resistant coating that will protect the components for many years to come.

Reel foot conforms to industry standards

You may not be aware that the fly tackle industry (of which we are a member) came to an agreement regarding the reel seat and foot standards. This was prompted by dealer and consumer demand to offer uniformity so that all reels would eventually fit on all rods. Great idea! Be assured that the Fly Logic team, known for meticulous detail, has made your reel to exacting specifications that will easily fit within the industry requirements.

Ample line capacity; generous palming area

A generous line capacity was one of the most important “wish list” features that we discussed early on. All our reels will accommodate plenty of backing (see the chart for exact measurements). No measurements have been hyped by using inferior, smaller line. All specifications were compiled with top quality lines. For those “traditional anglers,” we have provided the option of braking by hand by engineering a generous palming area.

Model*	Backing Capacity (yds)
FLP 345	160/110/85
FLP 567	210/195/175
FLP 890	350/300/275

*Model numbers denote line weight:
FLP 345 = 3wt./4wt./5wt.

Note: Line and backing measurements conducted with 444/444SL Cortland® & Scientific Anglers® Mastery WF floating lines with 20 lb. Micron® backing.

“Micro-Mate” spool tuning system

The “Micro-Mate” spool tuning system is an innovative feature that provides spool to frame clearance adjustment. Our quick release spool locking mechanism requires a small amount of spool end play for easy engagement and disengagement. The “Micro-Mate” system allows us (at the factory), to optimize this clearance amount. It allows you to tune your Fly Logic reel to accommodate additional spools or compensate for wear.

PROCEDURE - With the spool mounted and engaged, check the amount of end play (simply push and pull the spool in and out). If too little clearance exists, the release lever won't engage or drag will be felt when the spool is spun in the retrieval direction. Too much end play is self-describing.

1. If adjustment is desired, remove the spool from the reel. Using the handy “Micro-Mate” wrench we provide (any 7/16 wrench will do), engage the spindle hex cap (see diagram). Rotate the cap clockwise and tighten completely to re-establish the starting point of your “Micro-Mate” adjustment range. (Clockwise rotation also reduces the amount of the spool end play or clearance.)
2. If additional clearance is desired, rotate the cap slightly in a counter-clockwise direction. Mount the spool after each small adjustment and check for desired fit.

CAUTION - The “Micro-Mate” adjustment range is full clockwise to approximately 1/4 turn counter-clockwise. DO NOT exceed the 1/4 turn counter-clockwise limit as the spindle hex cap may then become loose. A little adjustment goes a long way.

